

ROUTE DESCRIPTION

This circular route takes in the sights and sounds of Southport's many famous landmarks. You will pass Victoria Park, home of the renowned Southport Flower show every August, and along the picturesque boulevard of Lord Street with its Victorian shop fronts and tranquil gardens.



The route continues past the well manicured Hesketh Park, open since 1868, with its numerous attractions including a conservatory, an observatory, lakes and cafe. You will ride along Park Crescent with the rich heritage views of its large

Victorian houses, pass the Marine Lake, home to various species of Swan and through the Kings Gardens.

1 Turn left from the Eco Centre car park and then right at the roundabout onto Victoria way.

2 Continue past Dune FM Radio Station and the Southport Splashworld water park and go left at the next roundabout.

3 Turn left onto Lord Street, with its miles of covered walkways and shopping arcades and continue straight ahead passing the large war memorial, the Town Hall and the Police Station up to the Traffic Lights at Park Road.



4 Go straight across the lights, Hesketh Park is now on the right, follow the road around the park until you reach the roundabout.

5 Turn left at the roundabout onto Cambridge Road and shortly after left into Hesketh Road.

6 Continue along Hesketh Road until reaching Fleetwood Road, turn left. Southport Municipal Golf Course, Englands oldest municipal links course, is on the right.

7 Turn right at the end of the road, go past the entrance to the Golf Course and follow the road round crossing over onto the shared use cycle track next to the Marine Lake.

8 Continue along the track with the lake to your left and turn right into the car park after the Lakeside Inn.

9 Follow the edge of the Marine Lake passing under the pier and through Kings Gardens up to the Miniature Railway Station.

10 Turn left out of the park and then right on the shared use path, passing Pleasureland back to the Eco Centre.



CYCLE HIRE

If you're visiting Southport and you haven't got your bike you can still enjoy our themed routes.

Low cost cycle hire is available for all the family.

Bikes can be hired at the Eco Centre or Southport Train Station.

For further information please contact the cycle hire centres or see the website:-

01704 500996.

cyclehire@southportcycletown.gov.uk

CYCLE RIDES

Haven't cycled for a while? Looking for more ideas of places to see and visit? Then why not join in with one of our regular cycle rides?

Our rides are led by trained cycle leaders and are suitable for all ages and abilities.

All rides are free and start from Dunes Splash World, The Esplanade, Southport. For further details contact telephone

0151 934 4680.

TRAINING

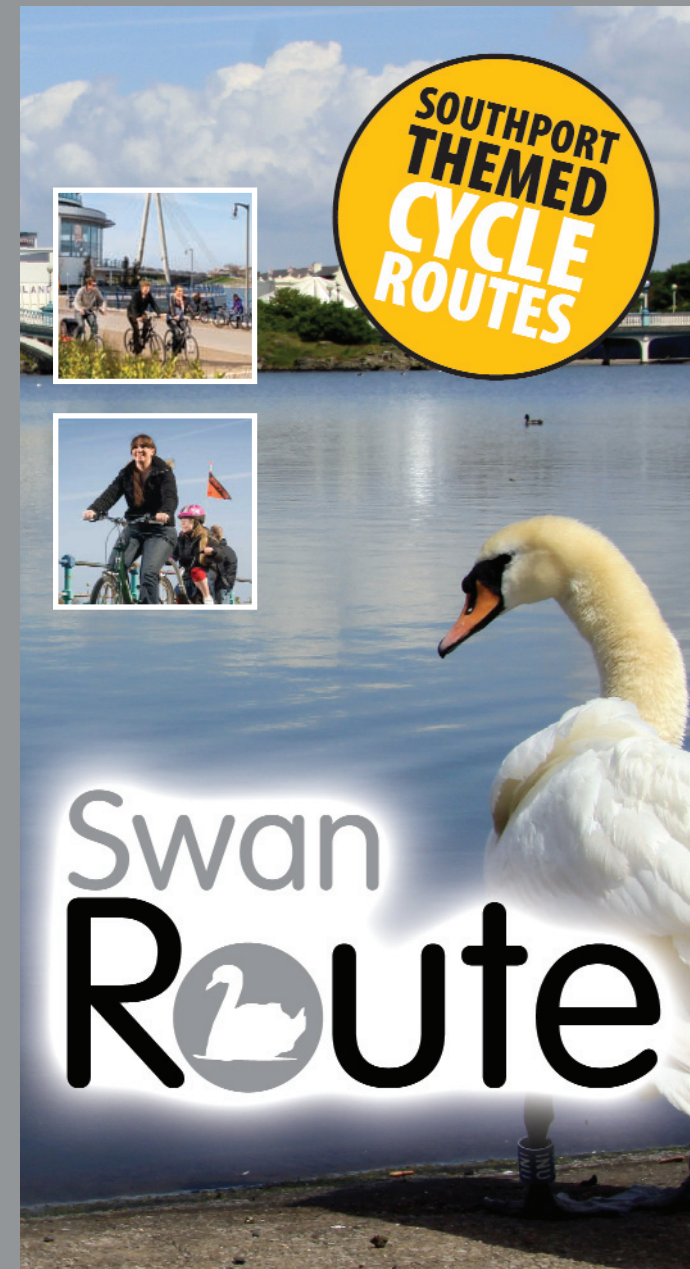
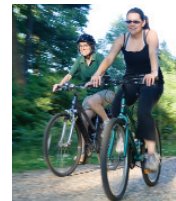
Wanting to learn to ride or if you're just lacking in confidence we have the training for you.

Adult training courses are held throughout the summer, they consist of 5 sessions and only cost a total of £10 per person.

For further details or to book a place please contact telephone **0151 934 4680.**

For further information e-mail us on info@southportcycletown.gov.uk

or visit our website www.southportcycletown.gov.uk



- Easy/moderate
- Mostly on road
- Distance 5 miles
- Time 40-50 mins



SOUTHPORT
ENGLAND'S CLASSIC RESORT



KEY

1 Swan Route

 Railway Station

 Cycle Hire Centre



Marine Lake



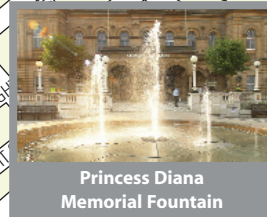
Southport Municipal Golf Centre



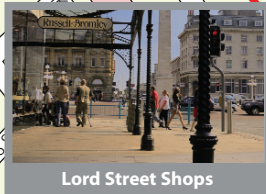
Lower Promenade



Observatory



Princess Diana Memorial Fountain



Lord Street Shops

